

# **PUEBLO COUNTY EMERGENCY OPERATIONS PLAN**

## **ANNEX I - WARNING**

### **I. PURPOSE**

To establish procedures for receipt and dissemination of warning to the population of a natural or man-made disaster, or a nuclear attack; to establish procedures for activating the Pueblo County Emergency Operations Center (EOC) and notifying its staff.

### **II. SITUATIONS AND ASSUMPTIONS**

#### **A. Situation**

1. Pueblo County includes both urban and rural populations which create special warning requirements.
2. Hazards are largely unpredictable and time available for warning will vary, based upon the incident.
3. The warning system must be functional every day of the year, under great weather extremes.
4. The Pueblo County Sheriff's Communication Center and Pueblo Police Communications Center operate twenty-four hours per day, seven days a week.

#### **B. Assumptions**

1. The Pueblo County Sheriff's Communications and Pueblo Police Communications Centers will be fully staffed and functional.
2. City, County and State governments will continue to function.

### **III. CONCEPT OF OPERATIONS**

#### **A. General**

1. Warning will utilize the most effective methods available for notifying the general public, the EOC staff and special needs

populations. Methods of warning include telephone (including but not limited to use of the Emergency Preparedness Network – EPN), messenger, outdoor warning systems, tone alert radios, public address systems, pagers and mass media.

2. The Pueblo County Sheriff’s Communication Center will normally initiate and monitor the warning procedure.

B. Direction and Control

1. In emergency situations, the Sheriff’s Communications Supervisor has authority to initiate warnings. An emergency is defined as direct and imminent threat to life or property.
2. Fire, law enforcement, emergency management and hazardous materials officials are authorized to execute large-scale warning and evacuation operations in accordance with Incident Command System (ICS) procedures. Coordination requirements for such executions are addressed in the Basic Plan.

C. Reports of situations that may endanger the public and necessitate warning may come from many sources, including private citizens, responding emergency services personnel, the National Warning System (NAWAS), the National Weather Service (NWS), news wire services, Pueblo Airport, Federal and State agencies, industries, utilities, Pueblo Chemical Depot (PCD), and others.

D. Warning must be calmly and safely executed so as to prevent what is only an emergency from developing into a disaster. Use one or more of the following techniques and facilities:

1. Mass media, radio and television, using the Emergency Alert System (EAS);
2. Outdoor Warning System;
3. Weather Alert and Tone Alert Radios;
4. The Emergency Preparedness Network (EPN);
5. Police and fire department vehicles’ sirens and loudspeakers;
6. Door-to-door sweeps by emergency services personnel; and

7. Telephone call-down to schools and major employers.

#### **IV. ORGANIZATION AND RESPONSIBILITIES**

- A. The organization for warning in Pueblo County is the same as the general emergency organization. See Section IV in the Basic Plan for organization specifics.
- B. Responsibilities:
  1. The Pueblo County Department of Emergency Management (DEM) is ultimately responsible for coordinating warning in Pueblo County. Many agencies and groups may participate in the warning procedure and as a result, lines of authority and responsibility may merge.
  2. Under the authority of the Pueblo County Sheriff's Communications and Pueblo Police Communications Centers, communications personnel will usually coordinate warning procedures. The Sheriff's Communications Center Shift Supervisor has initial warning authority unless relieved of authority by the Sheriff, the DEM Director or County Commissioner.
  3. The Pueblo County EOC staff will notify the State EOC in via radio, telephone, fax or computer link. The radio link to the State EOC is located in Room 11 of the Pueblo County EOC, on the south wall.
  4. NAWAS Procedures - See Appendix 1 of this Annex
  5. PUEBLO COUNTY SHERIFF'S COMMUNICATIONS AND PUEBLO POLICE COMMUNICATIONS CENTERS - see Appendix 2 - Tab A.
  6. CHEMICAL STOCKPILE EMERGENCY PREPAREDNESS PROGRAM (CSEPP) - See Appendix 3 (CSEPP incident alert will originate from the Pueblo Chemical Depot.)
  7. EMERGENCY ALERT SYSTEM (EAS) - DEM has authority to use EAS - See Annex J - Public Information.
  8. OUTDOOR WARNING SYSTEM – may be partially or fully activated from each of the four remote control centers, meeting either

their individual needs, or those of one of the other sites through mutual aid.

9. TONE ALERT RADIOS & WEATHER ALERT RADIOS-may be activated from the Sheriff's Office Communications Center.

## **V. ADMINISTRATION AND LOGISTICS**

DEM will maintain primary alert systems, i.e., communication from EOC to respective agencies. Internal systems will be maintained by the respective agency.

## **VI. ANNEX DEVELOPMENT AND MAINTENANCE**

The primary responsibility for development and maintenance of this annex is that of DEM with support from responding agencies. The annex will be reviewed annually unless significant change warrants an earlier revision.

## **VII. AUTHORITIES AND REFERENCES**

- A. Federal Emergency Management Agency STATE AND LOCAL EMERGENCY OPERATIONS PLANS, CPG 1-8 and CPG 1-8A, Washington, D.C.
- B. Federal Emergency Management Agency NATIONAL WARNING SYSTEM (NAWAS) OPERATIONS MANUAL, CPG 1-16, Washington, D.C.

# **NATIONAL WARNING SYSTEM PROCEDURES (NAWAS)**

## **I. PURPOSE**

- A. To warn all citizens of attack on the U.S.
- B. To warn specific areas of the threat of disasters.
- C. To warn affected areas of the threat of radioactive fallout.

## **II. SITUATION/ASSUMPTIONS**

- A. NAWAS consists of warning points at the National and State levels and is manned twenty-four hours per day.
- B. Warnings can originate at any level by persons having knowledge of an imminent threat to life or property.
- C. NAWAS will not be used for private (unofficial) purposes.
- D. When NAWAS is not used for emergency traffic, government personnel may use NAWAS for official business. Such use is discouraged and is only allowed when normal communications are unavailable. Non-emergency use will cease when another user announces emergency traffic.
- E. Local terminals are located at:
  - 1. Colorado State Patrol – Pueblo Office (State Warning Point)
  - 2. National Weather Service (NWS) - Pueblo Office

## **III. EXECUTION**

- A. The Colorado State Patrol (CSP) will contact Pueblo Police Communications Center and Pueblo County Sheriff's Communications Center directly via telephone of any NAWAS message of interest to this area. In addition, the CSP will use the Colorado Crime Information Center (CCIC) computer terminal to relay the information.
- B. Pueblo County Sheriff's Communications Officers will relay information forwarded from NAWAS as appropriate.

# COMMUNICATION ASSETS AVAILABLE IN PUEBLO COUNTY

- A. PORTABLE AND MOBILE RADIOS: Used by response agencies, school districts, etc.
- B. AMATEUR RADIO OPERATIONS: The Amateur Radio Emergency Service (ARES) has a local chapter and is available for use during exercises and emergencies.
- C. PUEBLO COUNTY REGIONAL COMMAND CENTER:
- D. COLORADO STATE PATROL COMMUNICATIONS VAN: The Van is located at the Federal Center in Denver. Call 719/544-2424 to coordinate use of the van. Provided that the van has not been dispatched elsewhere, CSP will have the van underway to Pueblo within thirty minutes of a request. Before requesting the van, secure approval from a County Commissioner, Sheriff or Director of DEM and determine the exact location to park the van. Prepare to provide explicit travel directions to van operators.
- E. PRECIPTATION & FLOOD MONITORING SYSTEM: The system's base station is located in the Pueblo EOC, Room 15.
- F. OUTDOOR WARNING SYSTEM: The Pueblo County Outdoor Warning and Meteorological Monitoring System currently consists of twenty warning sites, of which four have collocated meteorological monitoring equipment. The twenty sites are radio controlled from four redundant control centers, all of which rely on a repeater site on Baculite Mesa. The warning system utilizes electronic sirens, producing alert tones, and either pre-recorded or live voice messages. The remote control centers are located at the Pueblo Chemical Depot Operations Center, Pueblo Chemical Depot Fire Station, Pueblo Police Communications Center, and Pueblo County Sheriff's Communications Center, all of which are staffed 24 hours a day, 7 days a week. The Outdoor Warning System will be used for outdoor alert and notification for potentially life threatening events involving a chemical accident at the Pueblo Chemical Depot. The system can be used for notification of a hazardous materials accident elsewhere in Pueblo County, or a tornado that has been sited that could affect northeastern Pueblo County. See Appendix 2 – TAB B and TAB C for the warning site locations and projected sound propagation map.
- G. TONE ALERT RADIOS & WEATHER RADIOS: This system consist of specially programmed Tone Alert Radios and commercially available NOAA weather radios that may be used to notify individuals of a chemical munitions accident at the Pueblo Chemical Depot, or other emergencies, natural or man-made.

# **PUEBLO COUNTY SHERIFF'S COMMUNICATIONS CENTER AND PUEBLO POLICE COMMUNICATIONS CENTER**

- A. The Pueblo County Sheriff's Communications Center is located in the Pueblo County Emergency Operations Center (EOC), 320 West 10th Street, Basement.
- B. The Pueblo Police Communications Center is located at 130 Central Main Street.
- C. The Communication Centers initiate flood and tornado warning, hazardous materials (including chemical weapons) incident notification, law enforcement, fire and search/rescue dispatch, and medical emergency notification deemed necessary by competent authority.

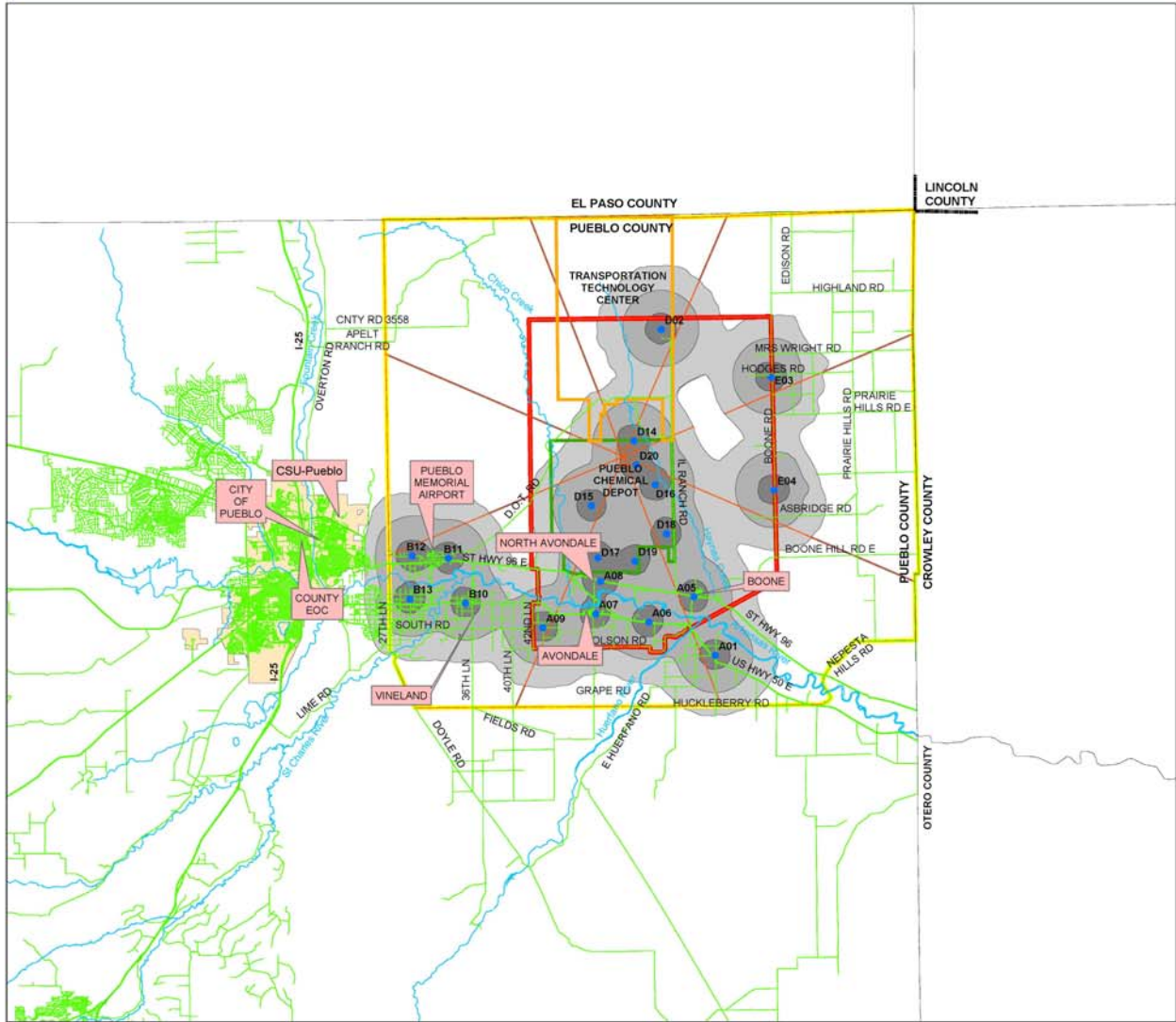
The Pueblo County Sheriff's Communications Center will notify Pueblo County Department of Emergency Management by telephone or pager. Refer to the Pueblo CSEPP Manual for CSEPP Notification procedures. The Pueblo Police Communications Center notifies Colorado State Patrol and the Pueblo County Sheriff's Communications Center for all major events. Refer to the Pueblo Police Communications Center Callout Book.

# **PUEBLO COUNTY OUTDOOR WARNING & METEOROLOGICAL MONITORING SYSTEM**

## **Warning Site Location Description**

- D1 - Pueblo Chemical Depot: Northeast of the chemical storage area (G-Block)
- D2 - Transportation Technology Center: Water tower (site includes meteorological monitoring equipment)
- E3 - Private Property: Boone Road and Hodges Road
- E4 - Private Property: Boone Road, 1.6 miles north of Asbridge Road (site includes meteorological monitoring equipment)
- A5 - Town of Boone: Boone Town Park
- A6 - Private Property: Highway 50 East, by Fort Reynolds Monument
- A7 - Avondale Elementary School, parking lot near Highway 50 E
- A8 - North Avondale: Highway 96 East and Avondale Boulevard (site includes meteorological monitoring equipment)
- A9 - Private Property: Banner Road and Skull Road
- B10 - Pueblo County High School: Along Highway 50 East (site includes meteorological monitoring equipment)
- B11 - Pueblo County Public Works Building: United Avenue
- B12 - Pueblo Memorial Airport Industrial Park: William White Boulevard, north of BF Goodrich
- B13 - North Mesa Elementary School: 29th Lane and Gale Road
- A14 - Private Property: 59th Lane and Cherry Road
- D15 - Pueblo Chemical Depot: South of Building 182
- D16 - Pueblo Chemical Depot: East Range Road and L-6
- D17 - Pueblo Chemical Depot: 1<sup>st</sup> Arterial Road, west of Fire Station
- D18 - Pueblo Chemical Depot: South Patrol Road and East Range Road
- D19 - Pueblo Chemical Depot: East end of East Plant Road
- D20 - Pueblo Chemical Depot: Near Process Support Building (PSB)

**CHEMICAL STOCKPILE EMERGENCY PREPAREDNESS PROGRAM  
OUTDOOR WARNING SYSTEM - SOUND CONTOUR MAP**



**NOTE:** The sound contours illustrated on this map are the output of a computerized sound propagation model, run by Analysis and Computing, Inc. for Pueblo County. They are therefore approximations and do not reflect actual measurements of sound. There are several meteorological and other factors that may affect the precise results obtained during activation of the system.

- |  |   |
|--|---|
| <span style="color: blue;">●</span> ALERT SITES  | — COUNTY BOUNDARY   |
| <span style="background-color: gray; border: 1px solid black; display: inline-block; width: 10px; height: 10px;"></span> 70 Decibels           | <span style="border: 2px solid orange; display: inline-block; width: 10px; height: 10px;"></span> TRANSPORTATION TECHNOLOGY CENTER BOUNDARY |
| <span style="background-color: lightgray; border: 1px solid black; display: inline-block; width: 10px; height: 10px;"></span> 60 Decibels      | <span style="border: 2px solid green; display: inline-block; width: 10px; height: 10px;"></span> PUEBLO CHEMICAL DEPOT BOUNDARY             |
| <span style="background-color: lightlightgray; border: 1px solid black; display: inline-block; width: 10px; height: 10px;"></span> 50 Decibels | <span style="border: 2px solid red; display: inline-block; width: 10px; height: 10px;"></span> IMMEDIATE RESPONSE ZONE BOUNDARY             |
| <span style="color: blue;">—</span> WATER  | <span style="border: 2px solid yellow; display: inline-block; width: 10px; height: 10px;"></span> PROTECTIVE ACTION ZONE BOUNDARY           |
| <span style="color: green;">—</span> ROADS   |   |

**SCALE**

0    2.5    5    10  
Miles

**PUEBLO COUNTY**  
GEOGRAPHIC INFORMATION SYSTEMS

The County of Pueblo Geographic Information Systems makes no claim as to the accuracy, completeness or content of any data contained herein, the digitally compiled maps and records have been created for internal development / maintenance use only. Any use other than as outlined herein is not recommended and is the sole responsibility of the user. No part of this document may be reproduced; stored in a retrieval system; or transmitted in any form or by means, electronic, mechanical, photocopying, recording, or otherwise, without the prior permission of the County of Pueblo Geographic Information Systems.

Map produced by the Pueblo County GIS Center in coordination with Pueblo County Department of Emergency Management.

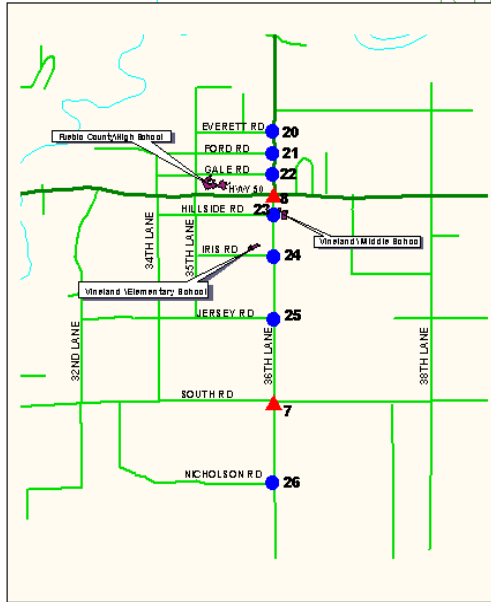
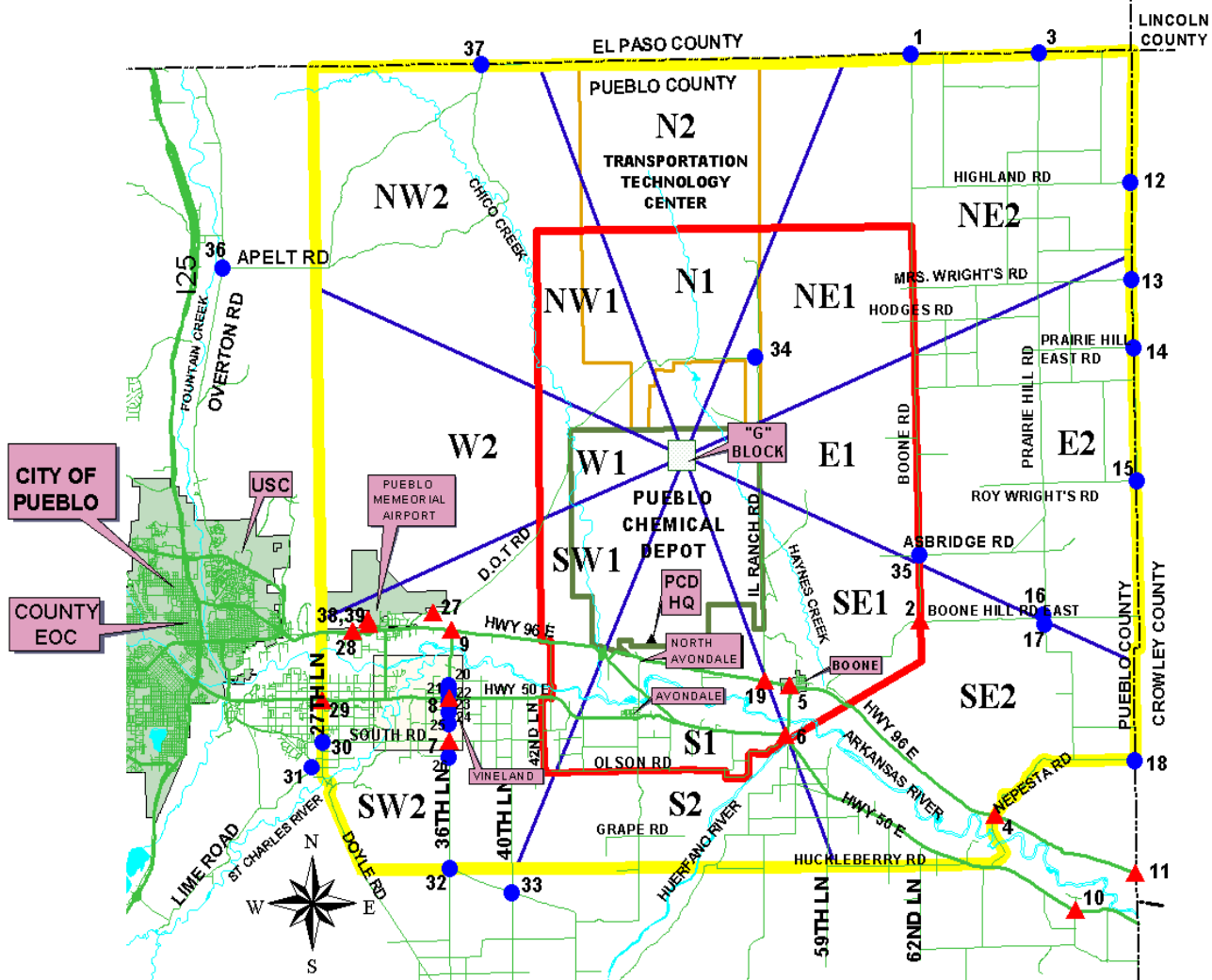
Data Sources: USGS 7.5' and 1:50000 series; Aerial Photography, NAD83 GPS Control (10/91); Aerial Photography 1:600 (3/2001); Census TIGER2000

Date: 09/27/2005  
Path: S:\gis\shirley\CEPP\Psirenbig.mxd

# **CHEMICAL STOCKPILE EMERGENCY PREPAREDNESS PROGRAM (CSEPP)**

- A. This Appendix must be used with Tab A of Appendix 3 (CSEPP MAP.)
- B. CSEPP is a federally funded program, administered by the Department of Defense (DOD) and the Federal Emergency Management Agency (FEMA), to prepare local jurisdictions for a chemical weapons incident at the U.S. Army Pueblo Chemical Depot (PCD) and other locations. PCD stores only mustard agent (HD and HT), a persistent blister agent. PCD stores no nerve or blood agents.
- C. If an incident occurs at PCD that has the potential to affect off-post personnel or territory, PCD will notify the Pueblo County Sheriff's Communications Center in accordance with the Memorandum of Agreement between Pueblo County and Pueblo Chemical Depot (MOA). The communications officer will record the information and immediately notify the Pueblo County Emergency Operations Center (EOC) Coordinator. The Pueblo County EOC Coordinator (designated by Pueblo County DEM Director) will determine if the Pueblo County EOC and Joint Information Center (JIC) will be activated. The PCD Operations Center will fax a hard copy of the message to the Pueblo County Sheriff's Communications Center after telephonic notification. The Pueblo County EOC Coordinator will review the Protective Action Recommendation (PAR) provided by PCD. Once the PAR is reviewed, the EOC Coordinator will issue a Protective Action Decision (PAD) based upon the best available information. If the Pueblo County EOC Coordinator is not available to review the PAR, the Senior Sheriff's Communications Center Officer will follow the PAR from PCD and follow the procedures in the Pueblo CSEPP Communications Center Manual (CSEPP Manual).
- D. PCD will provide the wind direction in the eight cardinal directions (N, NE, E, SE, S, SW, W, or NW) and in degrees, in accordance with the current Alert and Notification Form. The planning width of the plume will be 45 degrees (22 1/2 degrees to either side of the cardinal direction.) The PCD EOC will continue to refine the plume direction and size as the situation develops.
- E. The map is divided into two major areas, the Protective Action Zone (PAZ) and Immediate Response Zone (IRZ). Both the PAZ and IRZ are subdivided into eight response areas designated by a letter prefix and a 1 or 2 suffix. The prefix shows the directional location while the suffix shows the zone, i.e., IRZ (1) or PAZ (2.) Staff will use the response areas designator for planning and issuing reaction directives. See CSEPP Manual for instructions specific to each area.
- F. Tab B has instructions for activating Traffic Control Points (TCP), listed in the CSEPP Map (Tab A).
- G. There are no correctional or inmate populations located within the IRZ/PAZ.

# CHEMICAL STOCKPILE EMERGENCY PREPAREDNESS PROGRAM TRAFFIC CONTROL POINTS & EMERGENCY RESPONSE ZONES



### MAP KEY

<ul style="list-style-type: none"> <li><span style="color: red;">▲</span> Staffed Traffic Control Points</li> <li><span style="color: blue;">●</span> Barricaded Traffic Control Points</li> <li> County Boundary</li> <li> Major Roads</li> <li> County Roads</li> <li> Water</li> </ul>	<ul style="list-style-type: none"> <li> Protective Action Zone Boundary</li> <li> Immediate Response Zone Boundary</li> <li> Pueblo Chemical Depot Boundary</li> <li> Transportation Technology Center Boundary</li> <li> Areas (i.e. N1, SW2, ...., etc.)</li> <li> Incorporated City or Town Boundaries</li> </ul>
---	--

4      0      4 Miles

SCALE

Map produced by the Pueblo County GIS Center in coordination with Pueblo County Department of Public Safety and Operations.

Map Sources: USGS 7.5' and 1:50,000 series;

Aerial: Photogram, NAIP3 GIS Control (20/93);

Census: TIGER95

Date: 01/24/2001

File: \\pubco\det\desops\cdw\maps\projects

Source: esri\arc\map

View: \_zones\_of

The County of Pueblo Geographic Information System makes no claim as to the accuracy, completeness or timeliness of the data contained herein. The digital compiled maps and records have been created for internal use by the County of Pueblo only. Any use of this information for any other purpose is the sole responsibility of the user. No part of this document may be reproduced, stored in a retrieval system, or transmitted in any form or by any means, electronic, mechanical, photocopying, recording, or otherwise, without the prior written permission of the County of Pueblo Geographic Information System.

## **PUEBLO COUNTY TRAFFIC CONTROL POINTS (TCP'S)**

In the event an evacuation is recommended, residents will be notified to take the quickest route from the Immediate Response Zone (IRZ). The main routes to be used will be US Hwy. 50 east and west, Santa Fe Drive west, Co. Hwy. 96 east and west, South Road west, and Boone Road north or south.

Residents within the IRZ will be routed depending on direction and rate of mustard plume movement.

Depending on wind direction access and traffic control points (staffed or barricaded) will initially be set in the following locations:

<b>TCP #</b>	<b>LOCATION</b>	<b>STAFFING</b>	<b>RESPONSE AGENCY</b>
1	Boone Road & Pueblo/El Paso County Line	Barricades	Pueblo County
2*	Boone Road & Boone Hill East Road	2 person/1 marked	Pueblo County
3	Prairie Hills Road & Pueblo/El Paso County Line	Barricades	Pueblo County
4*	Nepesta Road & Hwy 96 East	2 person/1 marked	Pueblo County
5	Hwy 96 East & Hwy 209 (Westbound Lane)	3 person/1 marked	Pueblo County
6	Hwy 50 East & Hwy 209 (Westbound Lane)	3 person/1 marked	Pueblo County
7	36th Lane & South Road (Eastbound Lane)	2 person/1 marked	Pueblo County
8	36th Lane, Santa Fe/Hwy 50 East (Eastbound Lane)	3 person/1 marked	Pueblo County
9	36th Lane, Hwy 96 East & Hwy 50 East (Eastbound Lane)	3 person/1 marked	Pueblo County
10	Hwy 50 East & 67th Lane (Westbound Lane)	3 person/1 marked	Fowler
11	Hwy 96 East & Hwy 167 (Pueblo/Crowley County Line) (Westbound Lane)	3 person/1 marked	Fowler

<b>TCP #</b>	<b>LOCATION</b>	<b>STAFFING</b>	<b>RESPONSE AGENCY</b>
12	County Line Road & Highland Road (Pueblo/Crowley County Line)	Barricades	Pueblo County
13	County Line Road & Mrs. Wright's Road (Pueblo/Crowley County Line)	Barricades	Pueblo County
14	County Line Rd & Prairie Hills East Rd (Pueblo/Crowley County Line)	Barricades	Pueblo County
15	County Line Road & Roy Wright's Road (Pueblo/Crowley County Line)	Barricades	Pueblo County
16	Boone Hill Road East & Prairie Hills Road (Northbound Lane)	Barricades	Pueblo County
17	Boone Hill Road East & Prairie Hills Road (Westbound Lane)	Barricades	Pueblo County
18	Nepesta Road & County Line Road (Pueblo/Crowley County Line)	Barricades	Pueblo County
19	I L Ranch Road & Hwy 96 East	2 person/1 marked	Pueblo County
20	36 <sup>th</sup> Lane & Everett Road	Barricades	Pueblo County
21	36 <sup>th</sup> Lane & Ford Road	Barricades	Pueblo County
22	36 <sup>th</sup> Lane & Gale Road	Barricades	Pueblo County
23	36 <sup>th</sup> Lane & Hillside Road	Barricades	Pueblo County
24	36 <sup>th</sup> Lane & Iris Road	Barricades	Pueblo County
25	36 <sup>th</sup> Lane & Jersey Road	Barricades	Pueblo County
26	36 <sup>th</sup> Lane & Nicholson Road	Barricades	Pueblo County
27	DOT Road (Northeast of Target Warehouse)	3 person/1 marked	Pueblo County
28	Hwy 96 East & 29th Lane	Staffed	Pueblo County

<b>TCP #</b>	<b>LOCATION</b>	<b>STAFFING</b>	<b>RESPONSE AGENCY</b>
29	Hwy 50 East (Business) & 27 <sup>th</sup> Lane	Staffed	Pueblo County
30	27 <sup>th</sup> Lane & South Road	Barricades	Pueblo County
31	St Charles Road & Nicholson Road (at Bessemer Ditch Bridge)	Barricades	Pueblo County
32	36 <sup>th</sup> Lane & Field Road	Barricades	Pueblo County
33	40th Lane & Field Road	Barricades	Pueblo County
34	I L Ranch Road & DOT Road	Barricades	TTC
35	Asbridge Road & Boone Road	Barricades	Pueblo County
36	Overton Road & Apelt Ranch Road	Barricades	Pueblo County
37	Pueblo/El Paso County Line & Apelt Ranch Road	Barricades	Pueblo County
38	Paul Harvey Blvd. & United Blvd. (right lane access to United Blvd.)	Staffed	Pueblo County
39	Paul Harvey Blvd. & William White Blvd.	Staffed	Pueblo County

As time and personnel permits, other traffic control points may be established, further controlling access to the affected area.

\* Personnel that may be replaced by barricades later in the incident, may be used for roving law enforcement within the IRZ to protect against looting.